

Alankoy

Cu-Au Project

Multiple styles of mineralization. Large land position. Emerging District.

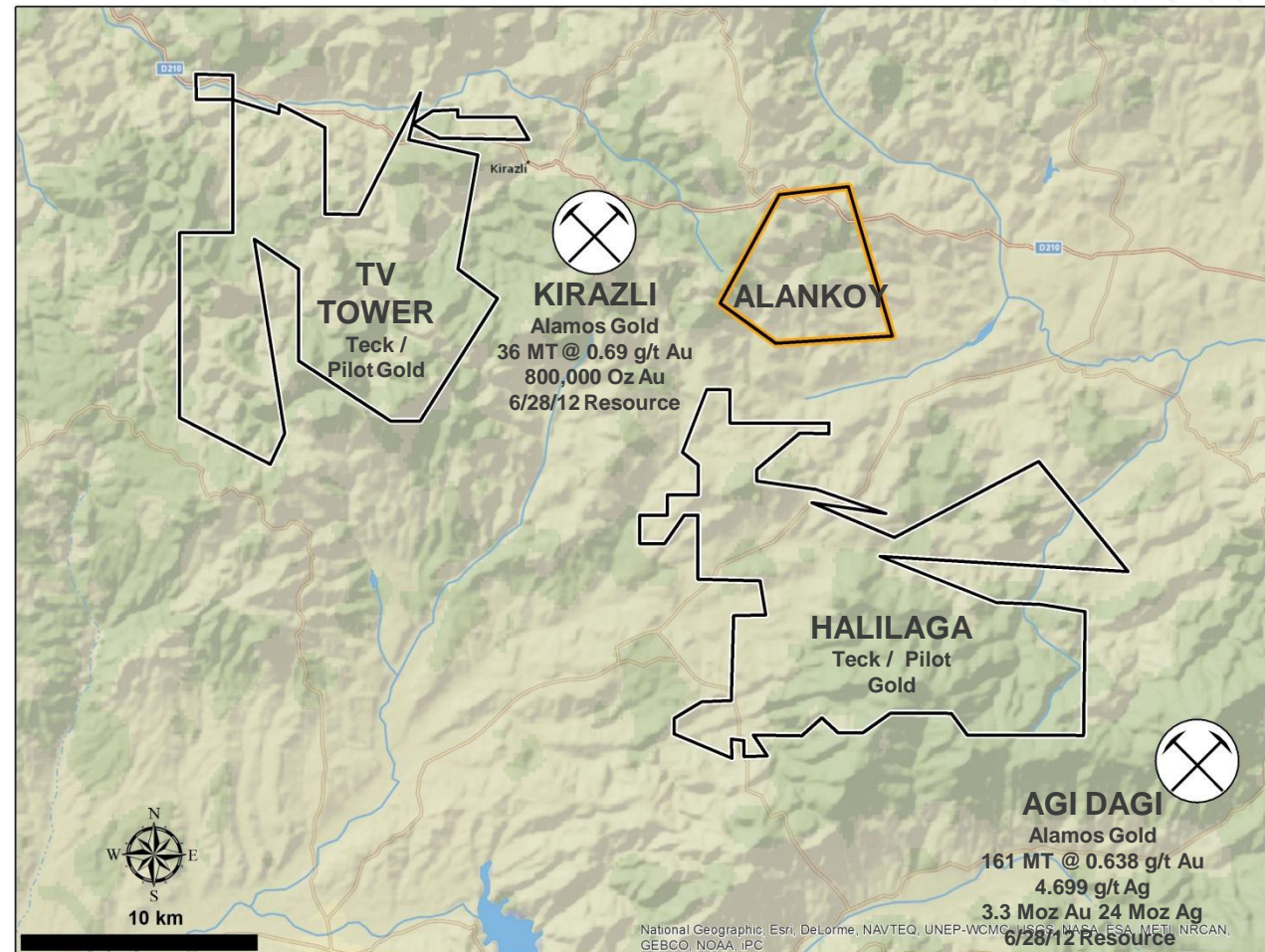


GEOLOGY:

- Host Rocks: metavolcanics, andesites and granites.
- Alteration: High sulfidation lithocaps with quartz-alunite and argillic alteration over 2 x 3 km area.

MINERALIZATION:

- Epithermal Au-Cu, with distal skarn and carbonate replacement deposits.
- Cu-Au mineralization intercepted at depth.
- Fe-oxide stockwork vein sets at lower elevations.
- Magnetite-rich skarn and jasperoid-like replacement bodies in carbonate rocks.



DETAILS:

- 19 Km², one permit, 100% EMX control.
- Excellent access via Highway D210.
- Supportive and stable jurisdiction.
- Robust mining infrastructure.

DATA:

- 1,245m trenching.
- 917 rock chip samples.
- 1,288 soil samples.
- 12 MTA drill holes: (151m each, 1,812m) targeted near surface epithermal gold mineralization.
- Hole MJTC-10 bottoms in 22m @ 0.25% Cu.

TARGETS:

- Intrusive/ porphyry target at depth.
- Proximal, garnet+ amphibole skarn.
- Distal gold mineralization in jasperoid replacement zones.

PARTNER WITH EMX:

EMX is a well-capitalized prospect generator with a ten-year track record in greenfields exploration, and assets in a dozen countries. EMX acquires early-stage properties worldwide, and seeks partners with insight and funding to advance them to discovery. Partners benefit from a flow of compelling projects managed by seasoned local geologists.

