

EAST FINE GOLD CK PROJECT



Our company was formed in 2020 with the focus on alluvial gold mining. At the same time, we also created an Exploration company to explore the broader area, as there is an unusual amount of coarse and angular gold in the creek, and simply we considered expanding our leases throughout the palmer goldfields totalling 500sq/klm approved and 200sq/klm under application.

*Our Mining lease ML20657 (**Figure: 1**) is within our EPM 27773.*

The sale process may include shares in the exploration company and depending on the number of shares purchased with an option of a seat on the board in Hardrock Minerals Exploration.

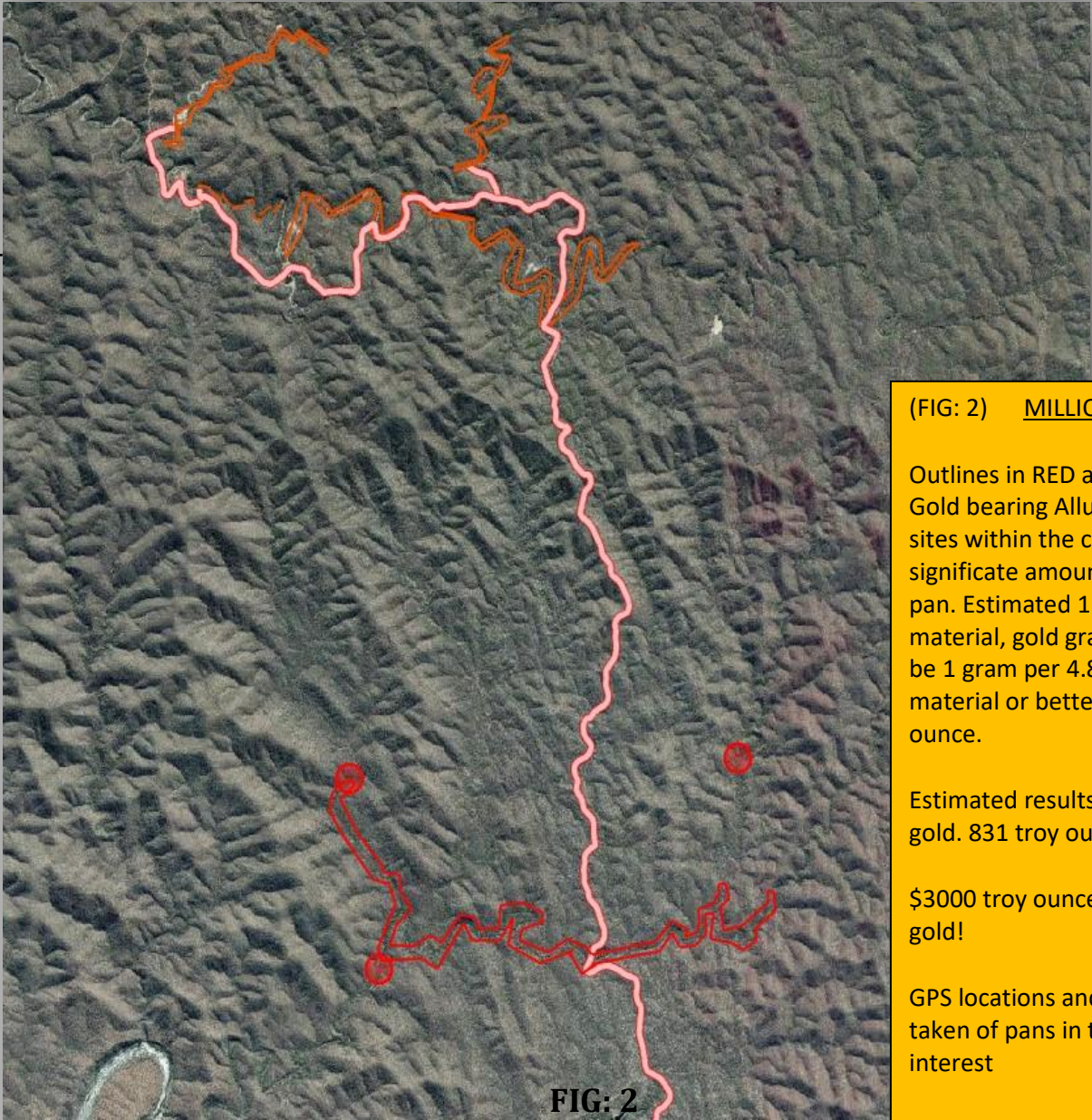
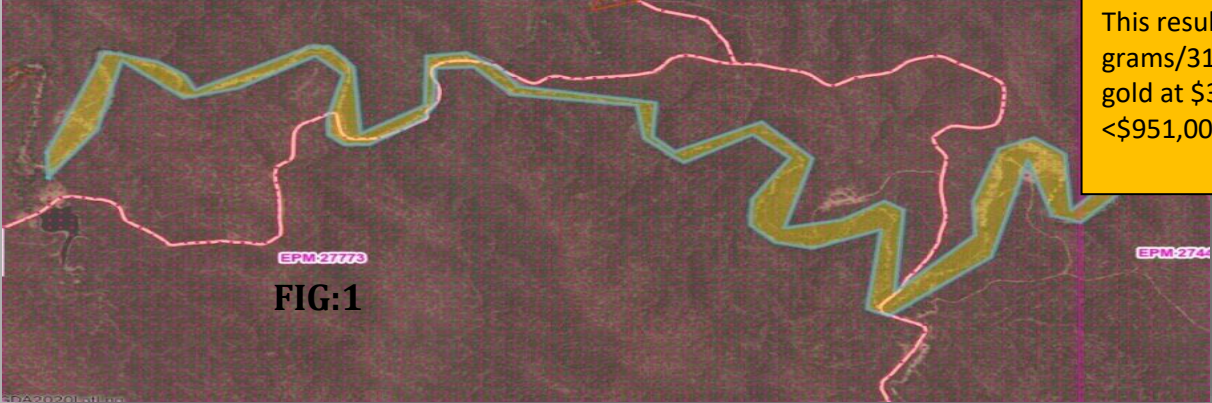
www.hardrockexploration.com.au

***lock in your access as first to offer to any prospective Alluvial and Hardrock mining leases within any EPM.** Details will be discussed further upon the sale as a 'Going Concern'.*

*Proven traces of Gold in Alluvial gravels outlined within EPM 27773. This area provides great position for Alluvial Mining within the close proximity of current mine site(5klms south along mine access road). (**Figure 2**)*

Mining Lease and EPM provided below for the purpose of identifying the area available for Alluvial and Hardrock mining. Gold purity has been tested, results between 96.5 – 97.5% consistently.

(FIG:1) EAST FINE GOLD CK
From past exploration reports, gold grade is estimated to be 1 gram per 6.1 cubic meters of material. 189m³:1 troy ounce and estimated 60,000m³ of material including terraces. This results in about 9871 grams/316 troy ounces of gold at \$3000 troy ounce = <\$951,000 in gold!



(FIG: 2) MILLION DOLLAR CK
Outlines in RED are areas tested for Gold bearing Alluvial graves. Trap sites within the creek produce a significant amount of gold in the pan. Estimated 125,000m³ of material, gold grade is estimated to be 1 gram per 4.8 cubic meters of material or better. 150m³:1 troy ounce.
Estimated results is 25900 grams of gold. 831 troy ounces
\$3000 troy ounce = <\$2,493,000. in gold!
GPS locations and photographs taken of pans in the area of interest

Processing Equipment

*Shaker Plant hydraulic driven with 12mm screen
6-inch water supply – high pressure spray bars – filter system with manifold to regulate water
3.8 metre sluice with hydraulic raffles and expander mesh
42.5m³ per/hr feed rate as an average*

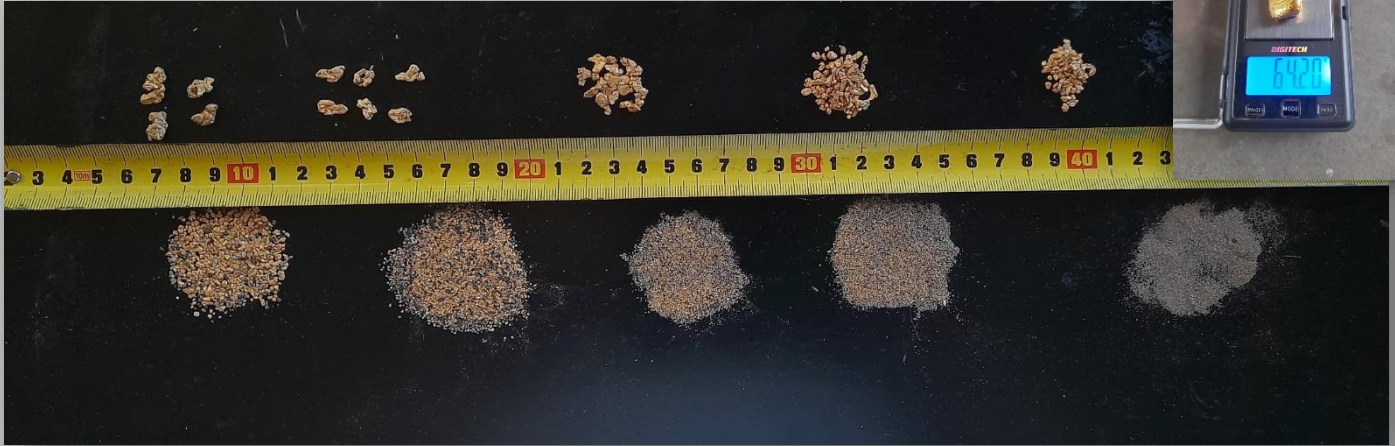


*Assortment of spares include
Sheets of steel plate and expander mesh
1-3/4-inch hose and fittings
10, 12, 16mm screen mesh
Lengths of assorted steel*



Gold

Our plant catches gold from 200 mesh and above.



10/19/22, 10:48 AM Serial No: 807834
OLYMPUS Vanta-807834 Current Method:
● System Status: Ready; Test Complete

Test Complete

Chemistry Spectrum Instrument Log Firm

Method: Test Date & Time: 2022-10-19 11:47:51
Karat: 23.26 Elapsed time: 5.0s

El	%	+/- 3σ
Au	96.94	0.22
Ag	2.91	0.21
Zr	0.155	0.038



MINING EQUIPMENT



AH 400 HITACHI - Articulated Dump Truck – 17,800hrs

SPECIFICATIONS

Rated Payload – 37 ton

Capacity heaped – 22 m³

Engine Make - 2346

Engine Model -

Mercedes Benz Im501LA

Gross Power - 314.7kw

Net Power - 308kw

Turbocharged & Intercooled

Displacement - 12L

Transmission Type -

Allison HD4500R with integral retarder

Number Of Forward Gears - 6

Number Of Reverse Gears - 1

Max Speed - 52km/h

Total Empty - 28848.5kg

Total Loaded - 65861.7kg

Fuel usage - 8L/ph



Service History

Serviced every 200hrs, Engine oil and filter, fuel filters

New alternator and drive belt fitted 17,700hrs

New drive belt tensioner fitted 17,620hrs

RH rear tyre replaced 17,780hrs

Tooling And Spares

Tyre pressure gauges and inflater – Lifting jacks and dunnage – Eng, Trans, Hyd oils in stock – one spare tyre and O’ring seals with spare tyre valves and tyre fitting lube

KAWASAKI 115 -iv – Wheel Loader 8m3 bucket – 24,900hrs

SPECIFICATIONS

Bucket Capacity – Heaped 6.3m3
Bucket Capacity – Struck 5.3m3
Number Of Cylinders 6
Engine Make 2347
Engine Model QSK19
Net Power 305.8kw
Power Measured @ 2000rpm
Max Torque 1762.6Nm
Displacement 18.9L
Torque Measured @ 1300rpm
Aspiration turbocharged
Operating Weight 43500kg
Fuel Capacity 620L
Hydraulic System Fluid Capacity 470L
Engine Oil Fluid Capacity 67L
Cooling System Fluid Capacity 128L
Transmission Fluid Capacity 85L
Front Axle/Diff Fluid Capacity 180L
Rear Axle/Diff Fluid Capacity 180L
Static Tipping Weight 28000kg
Operating Voltage 24V
Alternator Supplied Amperage 75amps
Fuel usage – 20-30L/ph



SERVICE HISTORY

Serviced every 200hrs
Greased every day of use
1 Battery replaced May 2022
Transmission service – Replaced oil and filters
Hydraulic pilot filter - replaced last 50hrs
Coolant inhibitor - replaced last 10hrs
Alternator replaced – April 2021

Tooling And Spares

*Tyre pressure gauges and inflater – Lifting jacks and dunnage – Eng, Trans, Hyd oils in stock
O'ring seals with spare tyre valves and tyre fitting lube*

CAT 330C EXCAVATOR – 1.4M3 BUCKET – 11,900hrs

Number Of Cylinders - 6
Engine Make - 2236
Engine Model - C9
Net Power - 182kw
Power Measured @ - 1800rpm
Displacement - 8.8L
Bore - 112.1mm
Stroke - 149.1mm
Net Power - Iso 9249 - 184.2kw
Net Power - Sae J1349 - 182kw
Engine Model - CAT C9
Net Power - 184.2kw
Net Flywheel Power - 184.2kw
Operating Weight - 35108.1kg
Fuel Capacity - 617.1L
Hydraulic System Fluid Capacity
174.2L
Hydraulic System Relief Valve Pressure
34294.5kPa
Hydraulic Pump Flow Capacity
560.3L/min
Cooling System
37.9L
Final Drive - Each
15.2L
Hydraulic System - Including Tank
408.9L
Engine Oil
35.6L
Fuel Tank Capacity
617.1L
Swing Drive
19L
Fuel usage
Mining - .25ltr per cubic metre
Processing - .15ltr per cubic metre



SERVICE HISTORY

Serviced every 200hrs Engine oil & filter, Fuel filters
Greased every day of use
2 Batteries replaced – 11, 200hrs
Hydraulic service – Replaced oil and filters 11,200hrs
Hydraulic pilot filter - replaced 11,850hrs
Coolant replaced - replaced last 11,200hrs
Alternator replaced – 11,100hrs
Final Drive LH + RH oils – replaced 11,100hrs
New Air conditioning system fitted – 11, 100hrs
New Engine Control module fitted – 11,400hrs
LH Track Idler fitted – 11,600hrs
One spare track idler – on site
New Exhaust Muffler fitted
New Engine wiring Harness
All oils replaced 11, 100hrs
Slew Grease replaced 11,600hrs
Hydraulic Pump – rebuilt all new internals and pilot pump

Tooling And Spares

Eng, Trans, Hyd oils in stock – Operators manual and troubleshooting guide.
CAT sis, compatible laptop and connecting harness

Attachments

- Quick hitch
- Mud bucket
- Rock bucket

Diesel Powered water pump with AXLE AND TOW HITCH

Very fuel Efficient and mobile – 200 litre in-built Fuel Tank average fuel usage = 7.5L/ph
100 hp Deutz – Diesel turbo, coupled to a new southern cross water pump
6-inch suction – 5-inch delivery
200m 6 inch lay flat
10m suction hose with High Flow Foot-Valve
2 x 6 Stud Toyota rims fitted with 2 x Spares on site
Serviced every 6 months
New Coolant October 2022



Dams & water

2 Permanent dams
Top lease dam
Access lease dam

Suction hose set up to Syphon water from the dam down to the mine site area.

(Dam usage terms under agreement with landowner)

- Low cost
- Time efficient
- Minimal Setup required
- Priming pump used to start syphon.



Mobile workshop



Workshop inventory

Hydraulic hose crimper, dies and crimping chart

Assortment of Hydraulic fittings

Pre-made hydraulic hoses and spare hose of different sizes

Grab kits – bolts, O-ring's, Seals, grease nipples, Hydraulic caps and plugs, hose clamps

Fabricating equipment – Mig/Stick welders, Rods and wire, Oxy/Gas cutting and heating

Genset and Air compressor with air hoses

Oils – Engine, Hydraulic, Transmission and Gear oil

Rubber support lining for screens on shaker plant/ spare screens/ spray bars and nozzles

300m 2' lay-flat couplings and clamps

60m 4' suction hose with couplings and foot-valve

Steel – pipe, flat bar, RHS, SSH, sheet, expander mesh, galvanised pipe fittings

20ltr Grease with pump

Hydraulic 4 Ton Crane fitted to flatbed tray

4500, 9000 and 600 litre fuel tanks

Transfer fuel pump and hose's

Camp



INCLUDED WITH CAMP

Tarp removed and Now with an iron and timber shelter

Bore pump, piping and accessories

7.5ka Inverter with solar panels

25 kva generator

Microwave and refrigerator

Shower and toilet amenities

Starlink satellite with wifi connections

Flat-bed crane

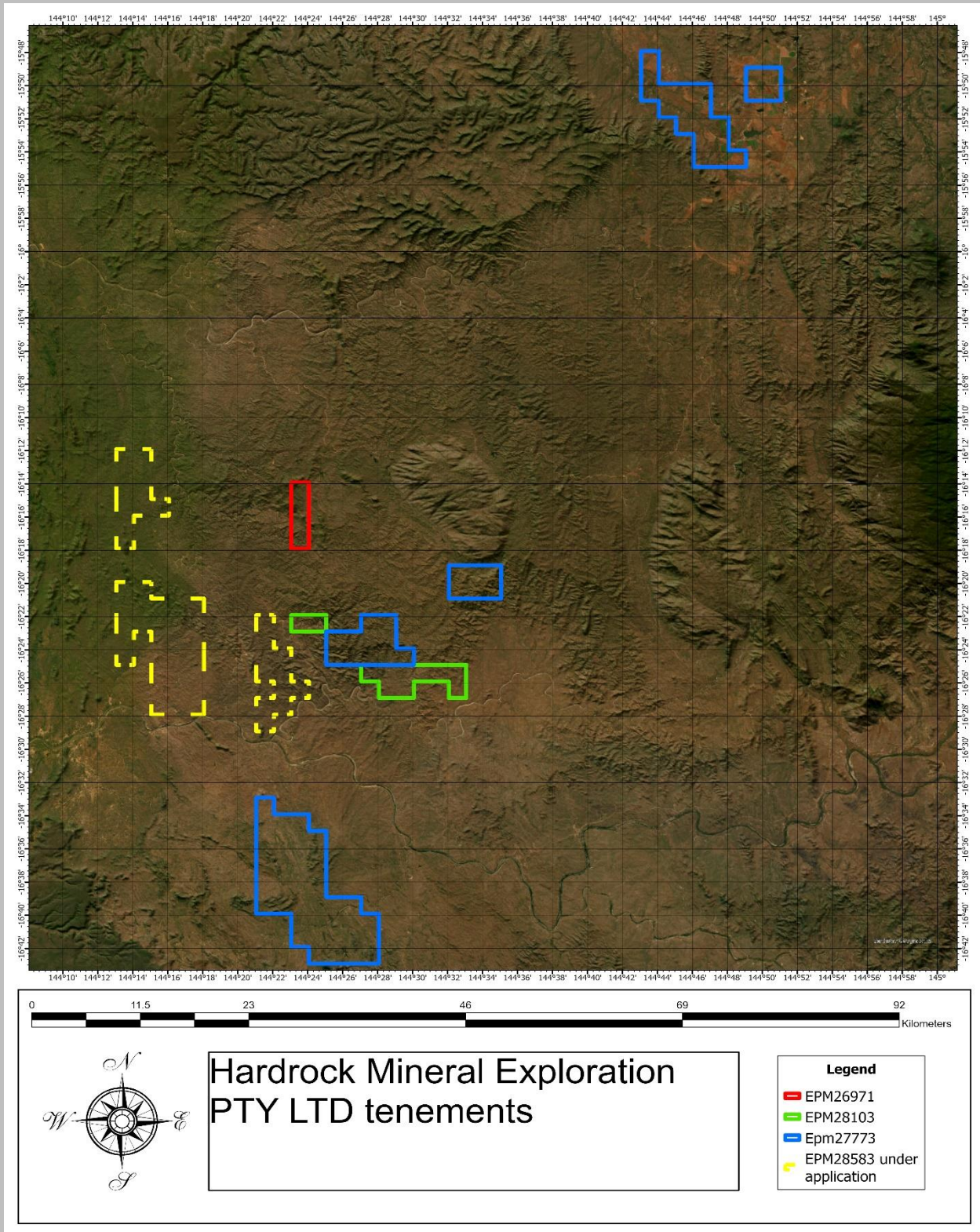


Hydraulic Power Pack


Used to power plant and workshop crane

Fuel efficient = 2.5L/ph

Tenements with proven Gold bearing Alluvials



Equipment value on current market price



Viewed


14

2004 Caterpillar 330CL

\$98,000

Track Mounted • 15,415 hours

Compare Save



4

2008 Hitachi AH400

\$140,000*

Excl. Govt. Charges

Artic • 12,516 hours

Compare Save



2006 KAWASAKI 115Z IV

Wheel Loaders

AUD \$57,382

Price entered as: USD \$40,000

Email Seller Get Financing

Machine Location: NO 2169 Fanghe Road, Minhang District Shanghai, Shanghai, China 0000

Seller Information

Shanghai Advanced Machinery Co.,Ltd

Contact: Emma Chu

Shanghai, China 200231

+86 183 1713 2369

WhatsApp

Video Chat

Apply for Financing



Paul

Gummie since 2016

Hi, I'm interested in "Gold Wash Plant". Is this still available? If so, when and where can I pick it up? Cheers.

I consent to receive marketing and third party offers from Gumtree

Sign in to message

3857 Show number

Sign in to make an offer

\$ 70000 Go

Safety and security tips

Always meet in person to inspect an item before exchanging money. [Find more helpful hints here.](#)

Wash plant above is half the capacity of the one in sale.

At Bedrock Mining we take safety seriously.

We have Implemented Site inductions, Safe work procedures, JSA's (Job Step Analysis) and site supervisors with over 50 years' combined experience in the Mining and exploration industry.

We implement safety to the highest possible standard ensuring everyone gets home safe to their families.

